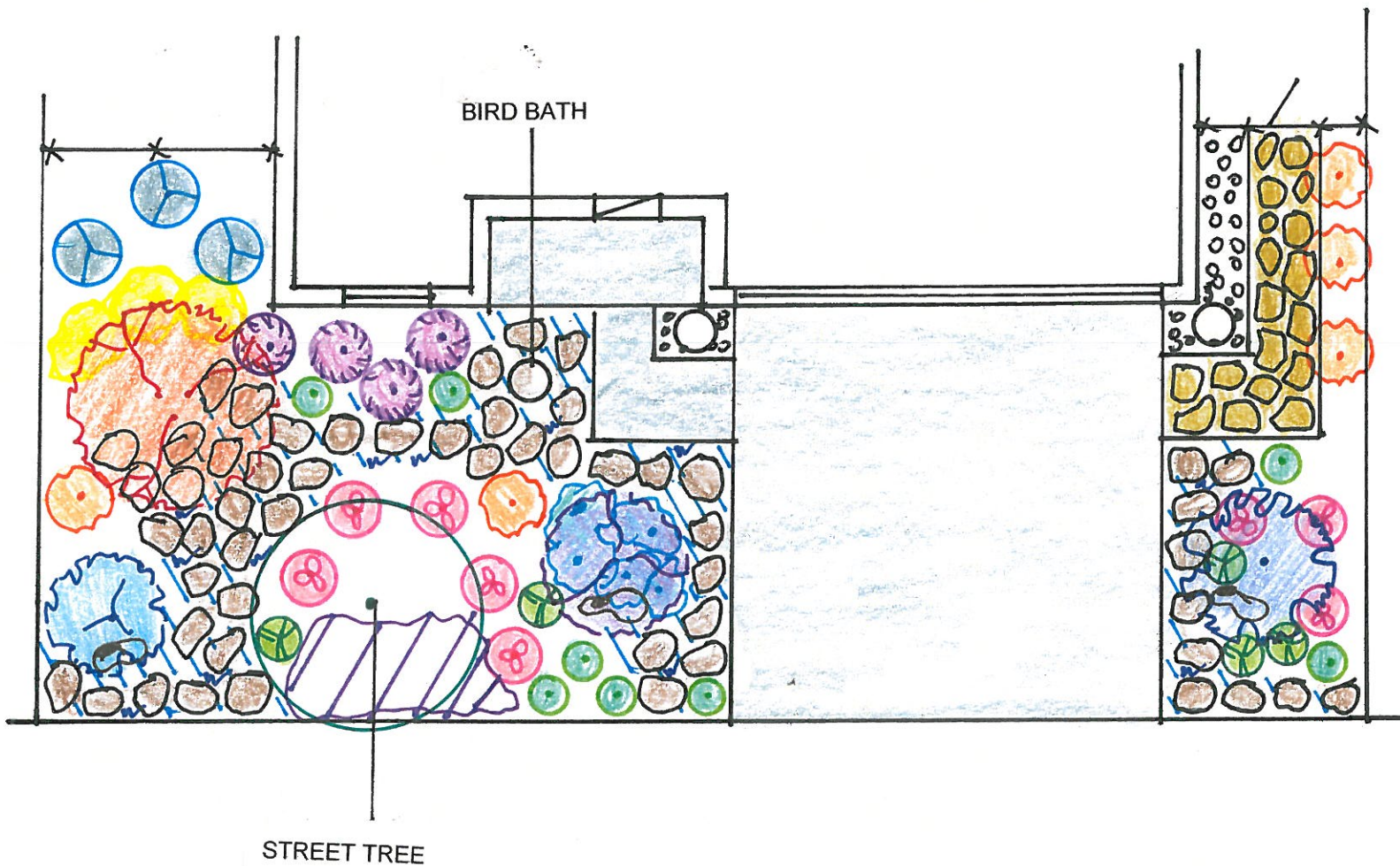


## Strolling Garden

This design has an assortment of drought tolerant plant material. It is butterfly and hummingbird friendly, and the mulch top dressing and flagstone stepping stones help guide you through the garden. Occasional pruning will help maintain the shape of the plant material.

The unthirsty plants and organic mulch make this a water efficient landscape while also adding curb appeal.

This garden with a landscaped area of 715 square feet requires about 6,760 gallons of irrigation water per year in the San Benito County area. A landscape of the same size with high water use plant material would require an addition 9,255 gallons of water

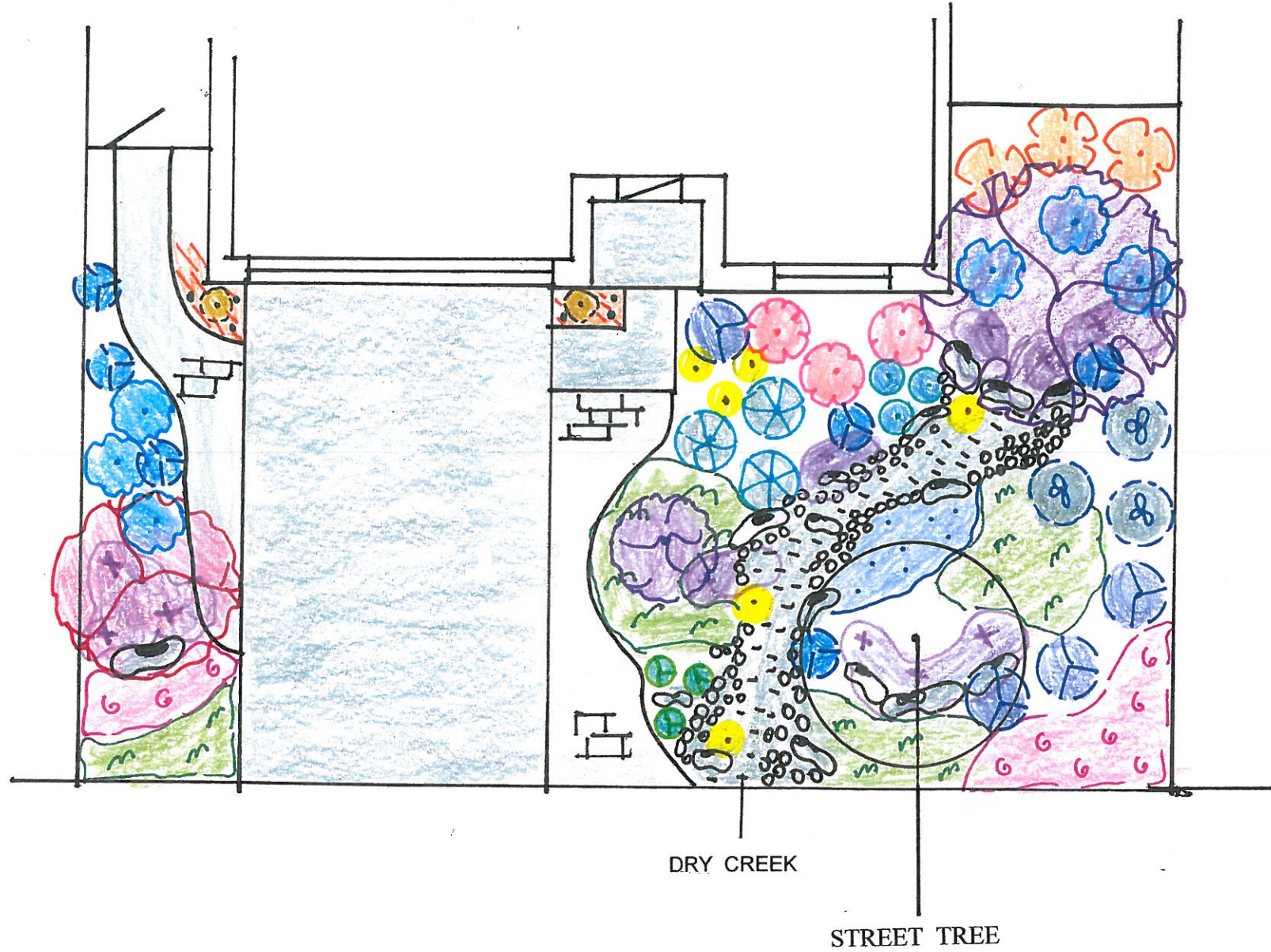


## PLANT LEGEND

KEY	BOTANICAL NAME	COMMON NAME	QUANTITY	SIZE
<u>TREE</u>	<u>TREE</u>		<u>FRONT</u>	
	CEANOTHUS 'RAY HARTMAN'	RAY HARTMAN	1	5 GAL
	LAGERSTROEMIA I. 'CENTENNIAL SPIRIT'	GRAPE MYRTLE MULTI TRUNK	1	5 GAL
<u>SHRUB</u>	<u>SHRUB</u>			
	CEANOTHUS THYSI. 'CONCHA'	CONCHA	1	1 GAL
<u>PERE.</u>	<u>PERENNIAL</u>			
	BUDDLEIA DAVIDII	BUTTERFLY BUSH	1	5 GAL
	CONVOLVULUS SABATIUS	GROUND MORNING GLORY	5	1 GAL
	CORREA PULCHELLA	AUSTRIALIAN FUCHSIA	8	1 GAL
	ERIGERON KARVINSKIANUS	SANTA BARBARA DAISY	8	1 GAL
	LANTANA SELLOWIANA YELLOW	TRAINING LANATANA	3	1 GAL
	LAVENDULA VERA	ENGLISH LAVENDER	4	1 GAL
	SALVIA CLEVELANDII	CHAPARRAL SAGE	3	1 GAL
	ZAUSCHNERIA CALIFORNICA	CALIFORNIA FUSCHIA	5	1 GAL
<u>GR.COV.</u>	<u>GROUND COVER</u>			
	THYMUS SERPYLLUM 'ELFIN'	CREEPING THYME	1	FLAT
	VERBENA PERUVIANA	PURPLE VERBENA	6	1 GAL
<u>OR.GRS.</u>	<u>ORNAMENTAL GRASS</u>			
	CAREX ALBULA	FROSTY CURLS SEDGE	5	1 GAL
	FESTUCA OVINA GLAUCA	SHEEP FESCUE	12	1 GAL
<u>CONTIA</u>	<u>SUCCULENT CONTAINER</u>			
	AEONIUM ARBOREUM	AEONIUM	6	4 INC
	ECHEVERIA SECUNDA GLAUCA	HENS AND CHICKS	6	4 INC
	SEDUM SPURIUM 'DRAGON'S BLOOD'	SEDUM 'DRAGON'S BLOOD'	2	6 PK
<u>HARDSC</u>	<u>HARDSCAPE</u>			
	BOULDER			
	ROCK			
	BARK			
	STEPPING STONES	FLAGSTONE WITH BARK		
	STEPPING STONES	FLAGSTONE WITH GOLD FINES		

**Dry Creek Theme.**

The main feature of this front yard design is the dry creek theme. The dry creek is permeable. It is surrounded by low water use plant material with a top dressing of bark to reduce evaporation. Pavers also provide an additional permeable surface with efficient foot traffic. This garden with a landscaped area of 1,030 square feet requires about 8,652 gallons of irrigation water per year in the San Benito County area. A landscape of the same size with high water use plant material would require an addition 15,020 gallons of water.



**PLANT LEGEND**

KEY TREE	BOTANICAL NAME	COMMON NAME	QUANTITY	SIZE
	LAGERSTROEMIA I. 'WATERMELON RED'	CRAPE MYRTLE	1	5 GAL
	ROBINIA X AMBIGUA	PURPLE ROBE	1	5 GAL
<b>SHRUB SHRUB</b>				
	CEANOTHUS GRIS. HORI. 'CARMEL CREEPER'	CARMEL CREEPER	6	1 GAL
	'CEANOTHUS 'JULIA PHELPS'	JULIA PHELPS CEANOTHUS	1	1 GAL
	NERIUM PETITE PINK	PETITE PINK OLEANDER	3	1 GAL
<b>PERE. PERENNIAL</b>				
	ARTEMISIA 'SILVER MOUND'	ARTEMISIA	3	1 GAL
	CONVOLVULUS CNEORUM	BUSH MORNING GLORY	3	1 GAL
	LANTANA SELLOWIANA PURPLE	TRAINING LANATANA	11	1 GAL
	LAVENDULA VERA	ENGLISH LAVENDER	4	1 GAL
	PHLOMIS FRUTICOSA	JERUSALEM SAGE	3	1 GAL
	SISYRINCHIUM HELLUM	BLUE-EYED GRASS	8	1 GAL
	TULBAGHIA VIOLACEA VAR.	SOCIETY GARLIC	3	1 GAL
<b>GR. CV. GROUND COVER</b>				
	MYOPORIUM PARVIFOLIUM	MYOPORIUM	18	1 GAL
	OSTEOPERMUM FRUTICOSUM	AFRICAN DAISY	10	1 GAL
<b>OR. GR. ORNAMENTAL GRASS</b>				
	CAREX ALBULA	FROSTY CURLS SEDGE	4	1 GAL
	HELICTOTRICHON SEMPERVIRENS	BLUE OAT GRASS	6	1 GAL
<b>SUCC. SUCCULENT</b>				
	AEONIUM ARBOREUM	AEONIUM	2	1 GAL
	ECHEVERIA SECUNDA GLAUCA	HENS AND CHICKS	6	4 INC
	SEDUM X 'AUTUMN JOY'	SEDUM X 'AUTUMN JOY'	3	1 GAL
	SEDUM SPURIUM 'DRAGON'S BLOOD'	SEDUM 'DRAGON'S BLOOD'	2	6-PAK
<b>HRDS. HARDSCAPE</b>				
	BARK			
	PAVERS			

DRY CR.	DRY CREEK	ELEVATION
	GRAVEL	-6"
	4"-6" DIAMETER COBBLE	LEVEL TO +12"
	BOULDER	LEVEL TO +12"+

LANDSCAPE DESIGN BY ROSEMARY BRIDWELL CCN, IA  
SCALE: 1/8" = 1 FT